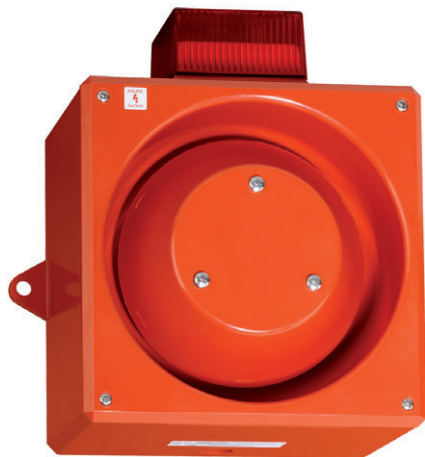


# Industrial Combination Signal 116 dB (A) / 5 Joule Series YL8



- > Max sound output 116 db (A) / 1 m
- > IP65 rated as standard
- > 5 Joule strobe
- > 32 selectable tones meeting international regulations
- > Flame retardant ABS enclosure
- > Stainless steel fixings
- > 2 stage alarm
- > Independently selectable second stage
- > Lens available in six different colours
- > Low current consumption

Yodalight range  
High output multi-purpose audible and visual signalling device  
designed for use in industrial applications.



## Approvals

Certificates

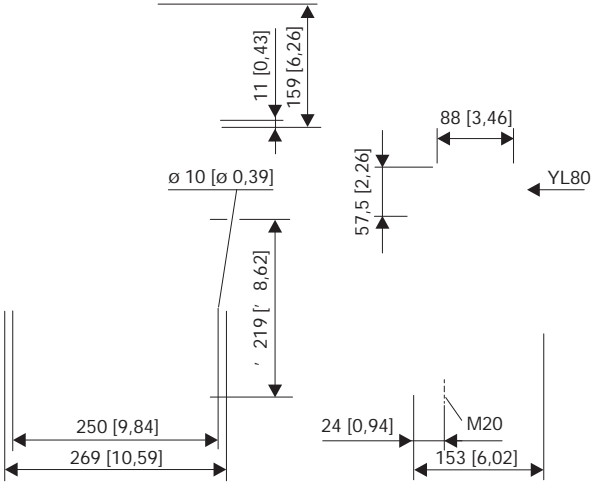
	UL 1638, UL 464
 0086-CPD-96705	BS EN 54-3 : 2001 incorporates amendment A 1 : 2002 + A2 : 2006
 KM 91259	BS EN 54-3 : 2001 incorporates amendment A 1 : 2002 + A2 : 2006
Note	Information for European users of the YL80 combination device: The optical device/beacon cannot be used as part of a fire alarm system. Only the sounder has been certified to the relevant EN54 standard.





# Industrial Combination Signal 116 dB (A) / 5 Joule Series YL8

**Dimensional Drawings** (All Dimensions in mm [inches]) - Subject to Alterations



We reserve the right to make alterations to the technical data, dimensions, weights, designs and products available without notice. The illustrations cannot be considered binding.